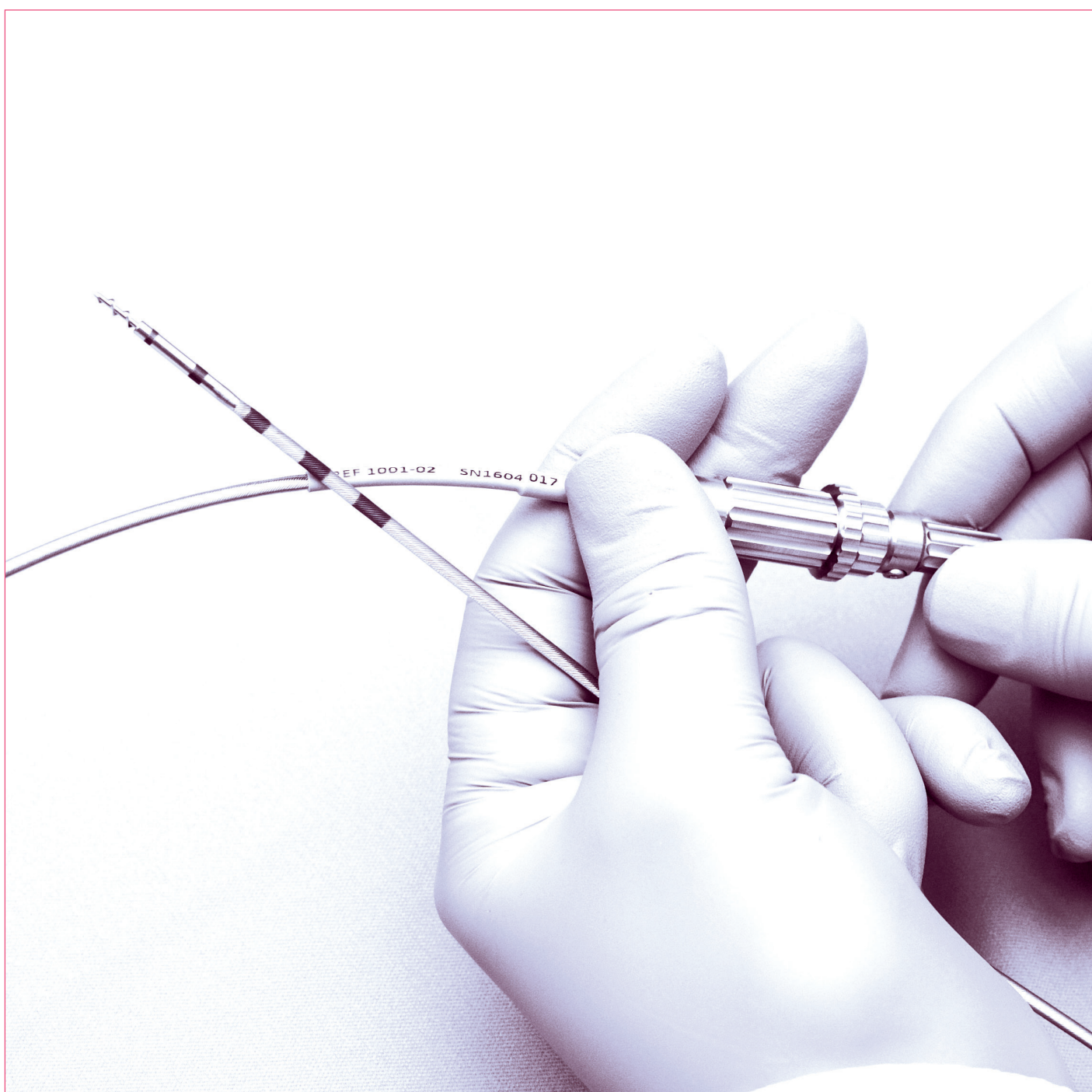
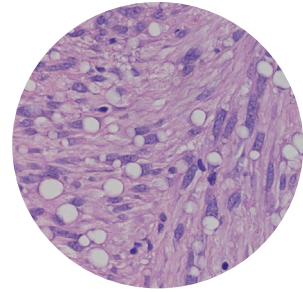
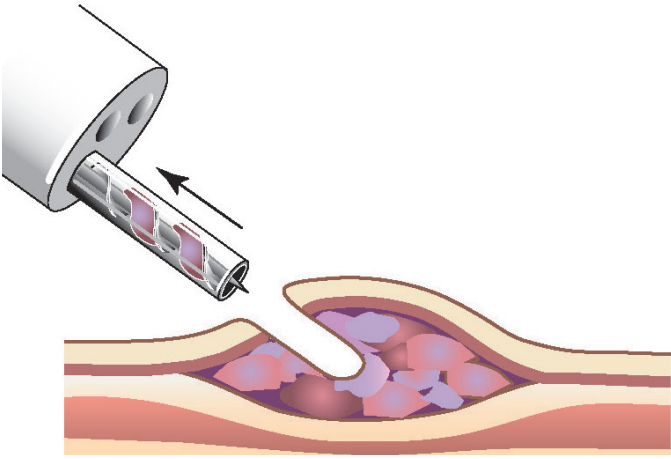


A Swedish innovation for sub-mucosal and deep tissue sampling



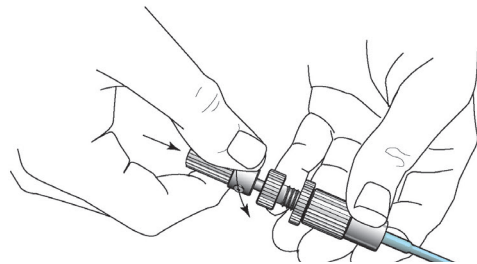
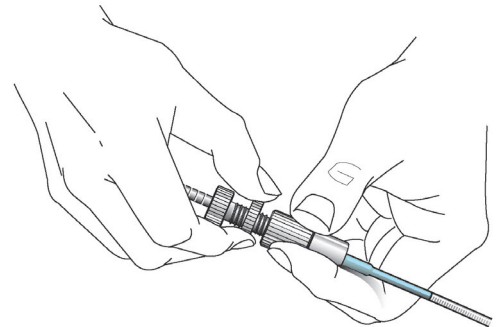
EndoDrill® GI

Single-Use Biopsy Tools

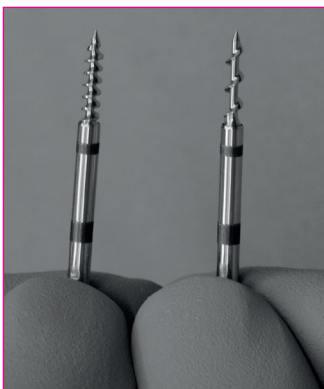


Features

- **Deep and submucosal sampling** of suspect tumor lesions
- **User friendly, ergonomic handle** enabling excellent tactile control
- **Adjustable stop in handle** facilitating regulation of drill depth adjustment both before and during the examination
- **Depth markings** on tip and adjustable stop providing visual and tactile feed-back during sampling
- **Versatile sampling technique** with seamless adjustment of both depth and rotation
- **Robust metal handle** allowing accurate adjustment of drill depth and rotation
- **Deep core-needle** like samples with ultrasound-guidance allowed, enabling safe and high quality sampling
- **Drill options** - Type A: for slow tissue penetration, and Type B: for faster penetration and greater tissue sample volume



Ordering Information



Type A: for slow tissue penetration

Type B: for faster penetration and greater tissue sample volume

Model Name	Order Number	Drill Option	Working Length (cm)	Working Channel (mm)	Quantity
EndoDrill A Upper GI	1001-01	5 threads	155	2,8	1
EndoDrill A Upper GI	1001-11	5 threads	155	2,8	3
EndoDrill B Upper GI	1001-02	3 threads	155	2,8	1
EndoDrill B Upper GI	1001-12	3 threads	155	2,8	3

Intended Use: The EndoDrill® GI is a surgical instrument intended to collect tissue for histological examination through a flexible endoscope

Reference: Walther C, Jeremiasen M, Rissler P, Johansson JL, Larsson MS, Walther BS.
A New Method for Endoscopic Sampling of Submucosal Tissue in the Gastrointestinal Tract: A Comparison of the Biopsy Forceps and a New Drill Instrument. Surg Innov. 2016 Apr 27.

BIBB Instruments AB
Medicon Village
SE-223 81 Lund, Sweden
Ordering Information
info@bibbinstruments.com
www.bibbinstruments.com

BIBB
INSTRUMENTS